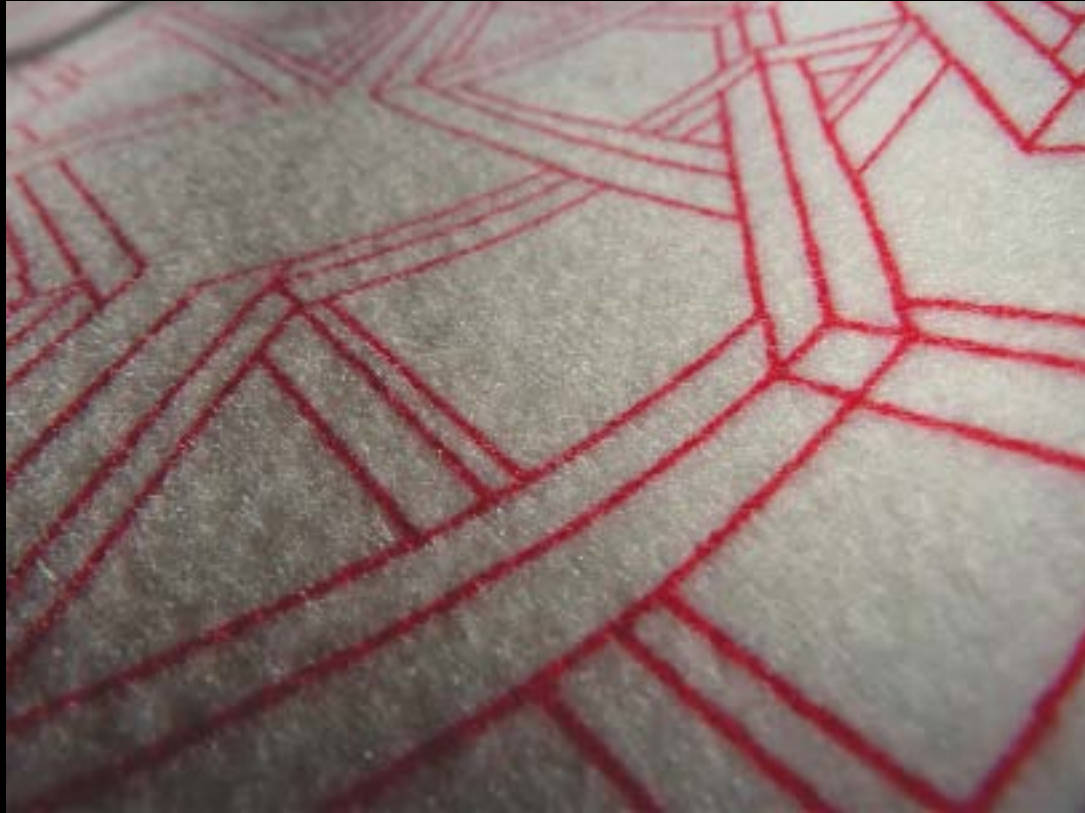


DANIEL HEATH

PROCESS ENABLED DESIGN

As a textile designer  
specialising in the  
traditional craft of silk-  
screen printing my primary  
interest has always been  
surface pattern.



Screen printed wool felt

Time spent working on fine fabrics for the high-end fashion, tailoring and interiors industries has influenced an understanding of the importance of tactile surface qualities.



This interest in surface has  
led me to look to other  
processes in order to apply  
my designs to new materials,  
for new outcomes.



Laser cutting has enabled  
the designer-maker to  
create 3D outcomes from a  
2D image.





Using CAD software, I am able  
create a vector file to  
design components that fit  
together precisely.



A high-end furniture product  
can be produced using  
contemporary 'digital craft'  
alongside quality materials,  
but little knowledge of  
traditional joinery or  
cabinet-making skills.

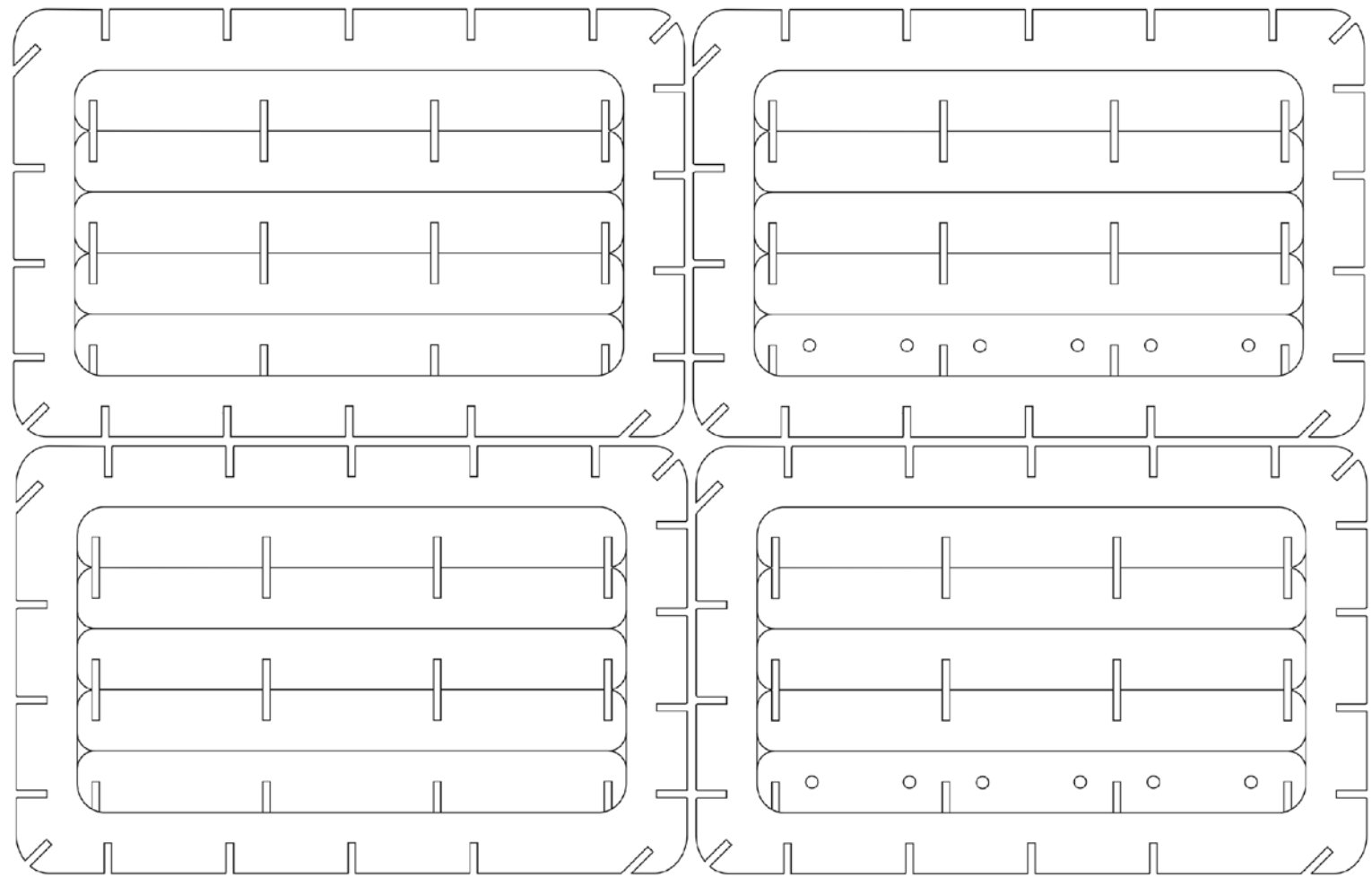


The furniture pieces are created using slice-forms that can be slotted together easily, allowing each piece to be constructed with minimal use of tools, fixings and glue.

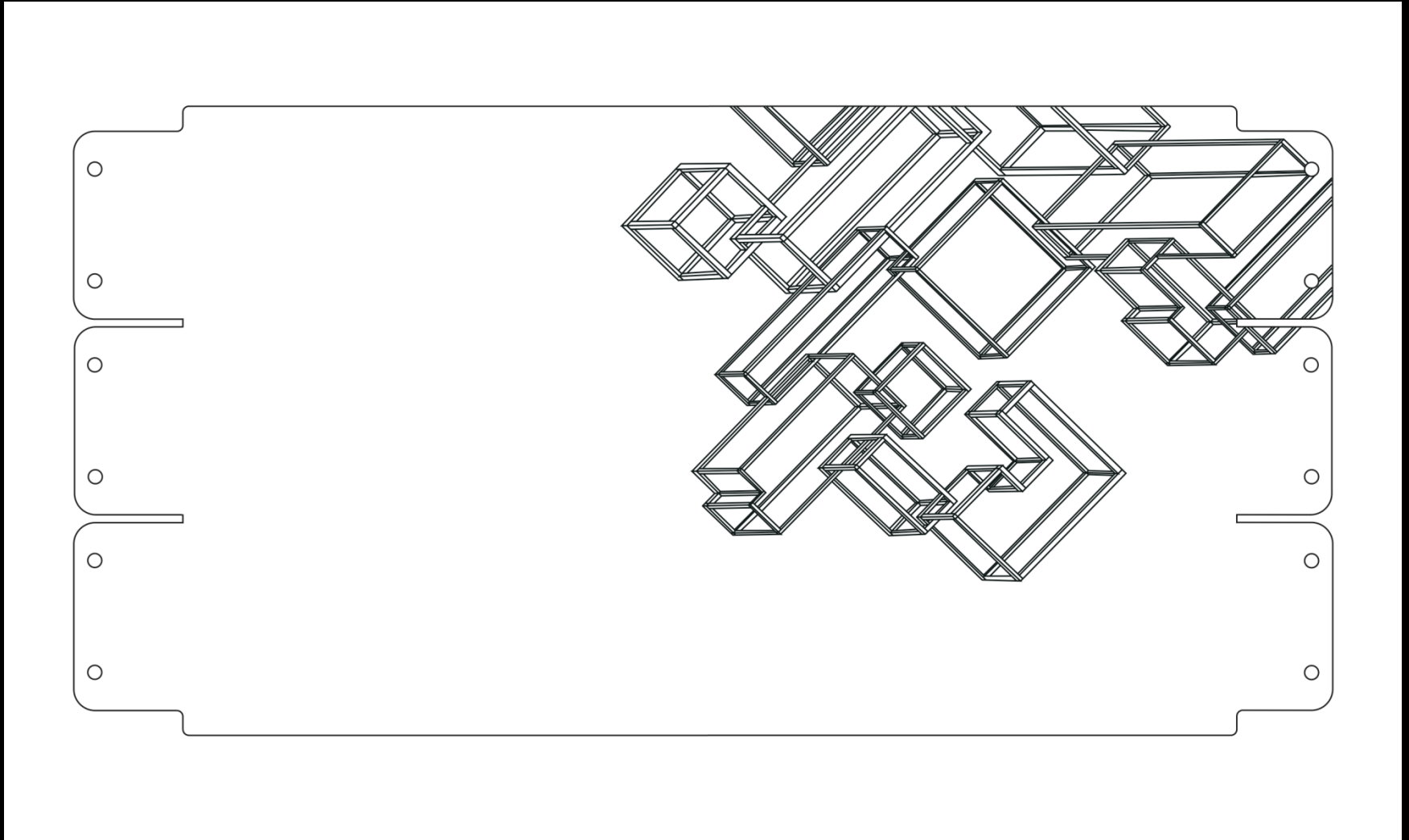


When the components are cut from the material they can be arranged to make the most economical use of the sheet by creating a lay-plan.





All components for the table base can be cut from 1 1200mm X 800mm sheet of ply.



The table top is cut and etched in rubber.

Using the materials  
economically cuts down  
production cost and time for  
the independent designer-  
maker.



Cutting and engraving are achieved using the same file, running the laser at different strengths and speeds.



In this way, the craft of making is no longer required. The craft of design becomes of primary importance. The laser is the only process & tool needed to develop the piece from sheet material to product.

Thank you.

For more information regarding  
my practice, studio  
collaborations and  
exhibitions, please visit:  
[www.danielheath.co.uk](http://www.danielheath.co.uk)